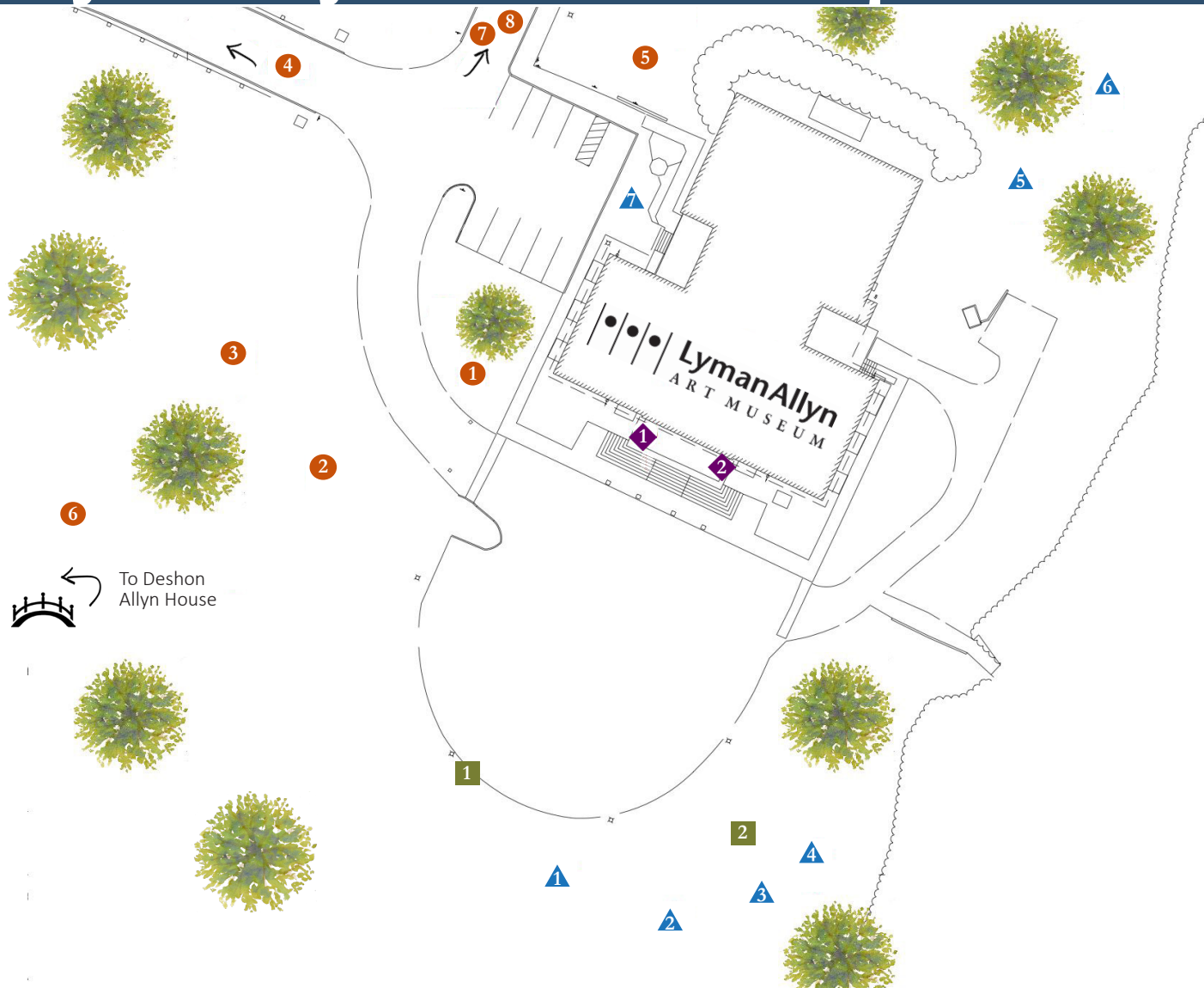


Lyman Allyn Art Museum Sculpture Trail



David Smalley Sculptures

1. *Double Yellow*, 1967, painted steel. LAAM.
2. *Portal (Gate)*, 2004-05, stainless steel, aluminum, granite. Smalley family.
3. *Five Rings Up*, 2003, stainless steel. Smalley family.
4. *Warlock III*, 1979, painted steel. LAAM.
5. *Cloud 9*, 1980, stainless steel. LAAM.
6. *Menorah*, 1994, granite, bronze. Loan by Congregation Beth El.
7. *Beacon*, 1999-2000, welded bronze, stainless steel. Smalley family.
8. *Warlock II*, 1974, cor-ten steel. LAAM.

Lyman Allyn Sculptures

1. Allyson Holtz, *Star and Sea*, steel. Loan by the artist.
2. Carol Kreeger Davidson, *David Goliath*, bronze. Loan by the artist.
3. Alvin Sher, *Altar of Decision*, welded & burnished aluminum. Loan by the artist.
4. Alvin Sher, *Cat's Cradle*, welded & burnished aluminum. LAAM.
5. Alvin Sher, *Sundial Font*, welded & burnished aluminum. Loan by the artist.
6. Alvin Sher, *Clairvoyant*, welded & burnished aluminum. Loan by the artist.
7. Artist Unknown, *Foo Dog*, Chinese early Qing Dynasty, bronze with iron casting. LAAM.

Judy Cotton Sculptures

1. *Adrift*, 2018, driftwood salvaged from the CT River. Courtesy of the artist.
2. *Dry River*, 2018, embedded stone. Dedicated to Yale Kneeland.

Gilbert Boro Sculptures

1. *Bowline Knot III*, 2019, powder coated welded steel tubing. Collection of the artist.
2. *Square Knot III*, 2019, powder coated welded steel tubing. Collection of the artist.

TOUR THE SCULPTURE TRAIL

Experience the natural beauty of our Sculpture Trail, McCourt 9/11 Memorial Garden, and our 12 acres of lawn and parkland.

Guided tours, self-guided exploration, and tours customized for a group's needs are available.



FOR THE LOVE OF ART

Enjoy the benefits of membership!

- Free admission to the Museum & all exhibition openings
- Discounts on programs, classes, travel & events
- Discounts on Museum gift shop items
- Invitations to "Members Only" social events
- Free admission to ten New England museums

Memberships start at \$50. For more information or to sign up, visit lymanallyn.org or call 860.443.2545.