

FOR IMMEDIATE RELEASE

February 21, 2024

Lyman Allyn Art Museum

Press Contact: Rebecca Dawson, Director of Communications

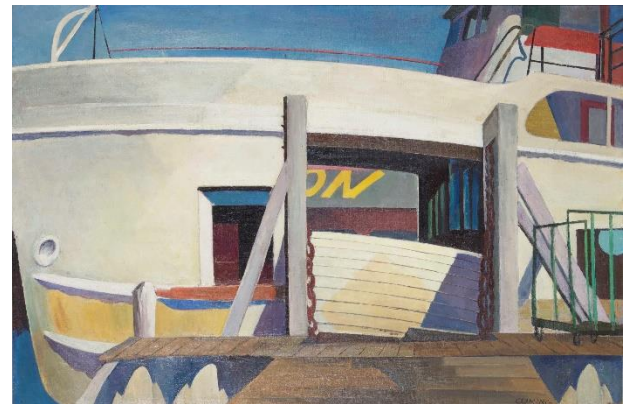
860.443.2545 ext. 2112 / dawson@lymanallyn.org

NEW LYMAN ALLYN EXHIBITION **CELEBRATES THE WORK OF BEATRICE CUMING**

NEW LONDON - The Lyman Allyn is pleased to present a special exhibition that explores the vision of Beatrice Lavis Cuming (American 1903-1974), an important and under-recognized Connecticut woman artist working in an era of tremendous change.

Beatrice Cuming: Connecticut Precisionist is on view from Feb. 24 through May 26.

Cuming worked in New London for much of her career. She celebrated modernity in her dynamic depictions of urban life in the 1930s, '40s, and early '50s. Merging elements of European modernism with American subjects, she painted the city's street scenes, views of regional industry, quiet interiors, and maritime landscapes. For Cuming and her Precisionist contemporaries, America's industrial growth epitomized progress, offering new and dynamic material for artistic exploration.



Beatrice Cuming, *Impact of White*, ca. 1951, oil on canvas, 23 3/4 x 35 3/4 inches. Museum Purchase, 1968.107.

Born in Brooklyn, New York, Cuming was the daughter of artist and illustrator Frederick Cuming. After graduating from the Pratt Institute, she traveled abroad from 1924 to 1926, studying in Paris before traveling and painting for a year in Italy, North Africa, England and Brittany. After returning to Brooklyn, Cuming made a second trip abroad from 1929 to 1933, staying in France with a winter trip to Tunisia.

Cuming, or "Bob," as she was known, moved to New London in 1934, where she was based for the rest of her career. Working on federally funded projects between 1934 and 1941, she produced WPA art for schools and government buildings in Connecticut, and she participated in focused WPA assignments. She documented American industry in several key corporate commissions, painting submarine construction at General Dynamics Electric Boat in New London/Groton and industrial activity at two of Standard Oil's processing plants in Pennsylvania in 1946.

Cuming was active in art organizations and received numerous grants and awards, including fellowships at the MacDowell Foundation, the Yaddo Foundation, the Huntington Hartford Foundation and the Bok Foundation. Her work was exhibited across the country in museum and gallery exhibitions, with solo New York exhibitions at the Guy Mayer Gallery in 1942, the

Contemporary Artist's Gallery in 1946 and the New Gallery in 1952.

Working to support herself as an artist throughout her career, Cuming taught art in the New London Public School system from 1936 to 1940, led adult art classes at the Lyman Allyn Art Museum starting in 1935, and later directed the Lyman Allyn's youth art program for many years.

A staple in the New London art community, Beatrice Cuming's varied depictions of industry, landscape and urban life invite us to reflect on history, regional identity, and progress.

The opening reception for the exhibition is Friday, Feb. 23, from 5 - 7 p.m. Museum members are free, and nonmembers are \$10. To register, call 860.443.2545 ext. 2129 or email us at info@lymanallyn.org.

Related programming includes a gallery talk with collector Jonathan Sproul and curator Tanya Pohrt on Wednesday, March 27 at 5:30 pm; a lecture with Dr. Barbara Zabel on Wednesday, April 10 at 5:30 pm; and a virtual lecture with Pierce Rafferty on Sunday, April 28 at 4:00 pm. More information will be available on lymanallyn.org.

We are grateful to the generous lenders of artworks to this exhibition and for the support of the Community Foundation of Eastern Connecticut; the Frank Loomis Palmer Fund, Bank of America, Trustee; and with support from the Connecticut Office of the Arts, which also receives funding from the National Endowment for the Arts, a federal agency.

For more information or to request images, please contact Rebecca Dawson by email at dawson@lymanallyn.org.

About the Lyman Allyn Art Museum

The Lyman Allyn Art Museum welcomes visitors from New London, southeastern Connecticut and all over the world. Established in 1926 with a gift from Harriet Allyn in memory of her seafaring father, the Museum opened the doors of its beautiful neoclassical building surrounded by 12 acres of green space in 1932. Today it presents several changing exhibitions each year and houses a fascinating collection of over 18,000 objects from ancient times to the present, including art from Africa, Asia, the Americas and Europe, with particularly strong collections of American paintings, decorative arts and Victorian toys and doll houses.

The Museum is located at 625 Williams Street, New London, Connecticut, exit 83 off I-95. The Museum is open **Tuesday through Saturday, 10 a.m. - 5 p.m. and Sundays 1 - 5 p.m.**; it is closed on Mondays and major holidays. For more information call 860.443.2545, ext. 2129 or visit lymanallyn.org.