

FOR IMMEDIATE RELEASE

June 25, 2025

Lyman Allyn Art Museum

Press Contact: Rebecca Dawson, Director of Communications

860.443.2545 x2112 / dawson@lymanallyn.org

LYMAN ALLYN PRESENTS ABSTRACT PAINTINGS BY DAVID J. MARCHI

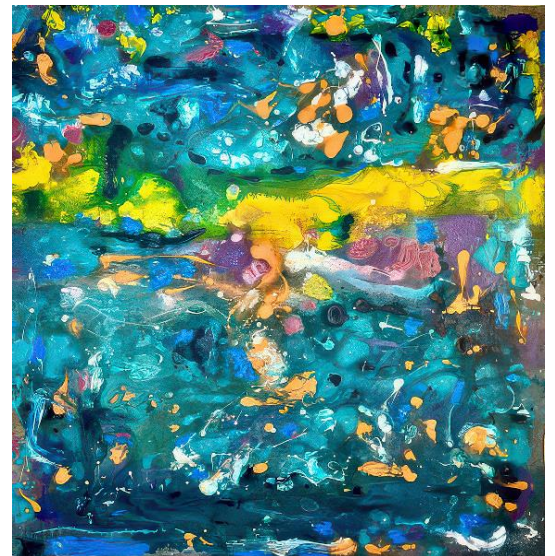
New London – Lyman Allyn Art Museum announces the opening of *David J. Marchi: Break on Through*. Painting with intensity and a sense of purpose, David J. Marchi produces energetic and bold abstract paintings that document his deeply personal journey of artistic transformation. This exhibition is on view June 28 through October 19, 2025.

This exhibition traces Marchi's recent artistic career, exploring his ideas and processes and highlighting his various bodies of work. Layering colors, patterns, and methods of paint application, Marchi utilizes gesture, physicality, and unusual materials and methods to produce vibrant, large-scale canvases.

Remarkably, Marchi had never painted before a life-altering boating accident in 2015. During his recovery, he discovered a previously untapped artistic drive and was compelled to paint. This phenomenon, later diagnosed as Acquired Savant Syndrome, is an unusual condition, and Marchi is one of only about 50 documented cases of this syndrome worldwide. Leaving his previous profession to embrace the world of art, David followed his intuitive drive to create, often working from vivid dreams that lay out colors and structures for him to follow. As his work has matured, Marchi has studied with artists Ronnie Landfield, Larry Poons, Pat Lipski and Peter Bonner at the Art Students League of New York.

Marchi also draws on his experiences to help instruct others in art therapy, working with students with disabilities to help foster creativity and inclusion through artmaking. His experience suggests the ways that creativity lives within everyone, regardless of experience or background, serving as a reminder that art can be a profound tool for recovery, connection, and transformation.

"Working with David Marchi in the production of this exhibition has been exceptionally enjoyable and rewarding for everyone involved here at the Lyman Allyn," says Lyman Allyn Art Museum Director Sam Quigley. "His artistic brilliance, passion for life, and generosity of



David J. Marchi, **Electric Rainforest**, 2025, acrylic on canvas, 70 x 70 in.

spirit is deeply appreciated. We are delighted to feature his work in our **Near::New** series of contemporary exhibitions, a series that celebrates the artists among us.”

The opening reception is Friday, June 27, from 5 - 8 p.m. Museum members are free, and non-members are \$10. To register, call 860.443.2545 ext. 2129 or email us at info@lymanallyn.org.

For more information or to request images, please contact Rebecca Dawson by email at dawson@lymanallyn.org.

This exhibition has been made possible with support from an anonymous foundation. Funding has also been provided by the Connecticut State Legislature, administered by the Department of Economic and Community Development, Office of the Arts.

About Lyman Allyn Art Museum

Lyman Allyn Art Museum welcomes visitors from New London, southeastern Connecticut, and all over the world. Established in 1926 with a gift from Harriet Allyn in memory of her seafaring father, the Museum opened the doors of its beautiful neoclassical building surrounded by 12 acres of green space in 1932. Today it presents several changing exhibitions each year and houses a fascinating collection of over 19,000 objects from ancient times to the present, including art from Africa, Asia, the Americas, and Europe, with particularly strong collections of American paintings, decorative arts and Victorian toys and doll houses.

The museum is located at 625 Williams Street, New London, Connecticut, exit 83 off I-95. It is open **Tuesday through Saturday, 10 a.m. - 5 p.m. and Sundays 1 - 5 p.m.**, and closed on Mondays and major holidays. For more information call 860.443.2545, ext. 2129 or visit www.lymanallyn.org.